

Q-70 Gable Top Packaging Machine



- **Fill Volume**
 - 180ml to 1.15L (metric)
 - 6 to 32 oz (US measure)
- **Up to 7,000 cph (117 cpm)**
 - quarts/liters
- **Up to 9,000 cph (150cpm)**
 - fractional sizes
- **Low Infeed Loading Height**
 - Ergonomic design for operator comfort and ease of loading
- **Pyramid Bottom**
 - Smooth outer edge provides flat plane for carton to rest on shelf
- **Less Downtime - Infinite Fill Adjustment**
 - Quick and easy changes to fill volume and carton height
- **Servo Driven**
 - Main Drive
 - Infeed Loader
 - Mandrels
 - Lift
 - Fill
 - Conveyor Chains
 - Automatically controls fill volumes and profiles based on product and carton size
- **Single Station Foam Free Bottom-Up Fill System**
 - Double diaphragm metering bowl enables accurate, consistent fill volumes
 - (EQ-70 – Top Down Fill)
- **Two-Stage Top Sealing**
 - Provides gentle and uniform heat
- **Simple to Operate and Maintain**
 - Easy access
 - Robust design reduces machine down time
 - Auto lubrication system standard
- **Options:**
 - SPOUT-PAK® system
 - ESL features
 - HEPA
 - Auto sanitize
 - Carton sanitization
 - L1 through L4 available
 - Self-Contained CIP
 - Remote Captive Water System
 - Product tank drain valve
 - Juice nozzle
 - Spray ball
 - J-Bottom, skived

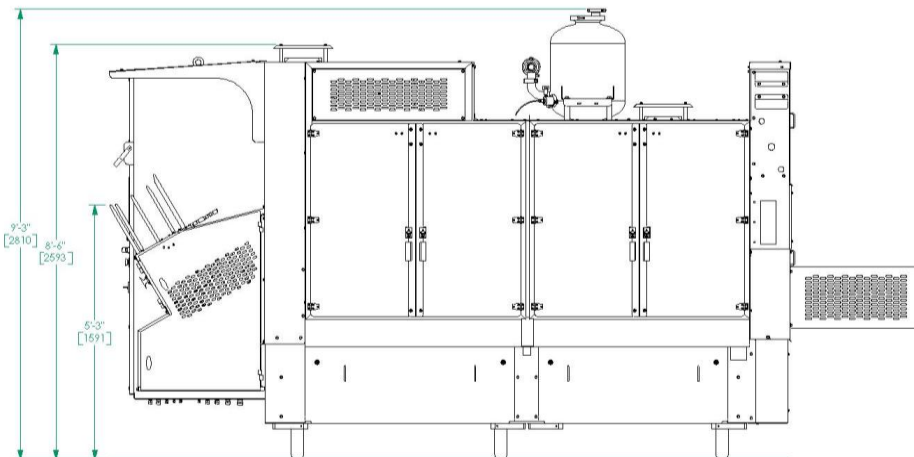
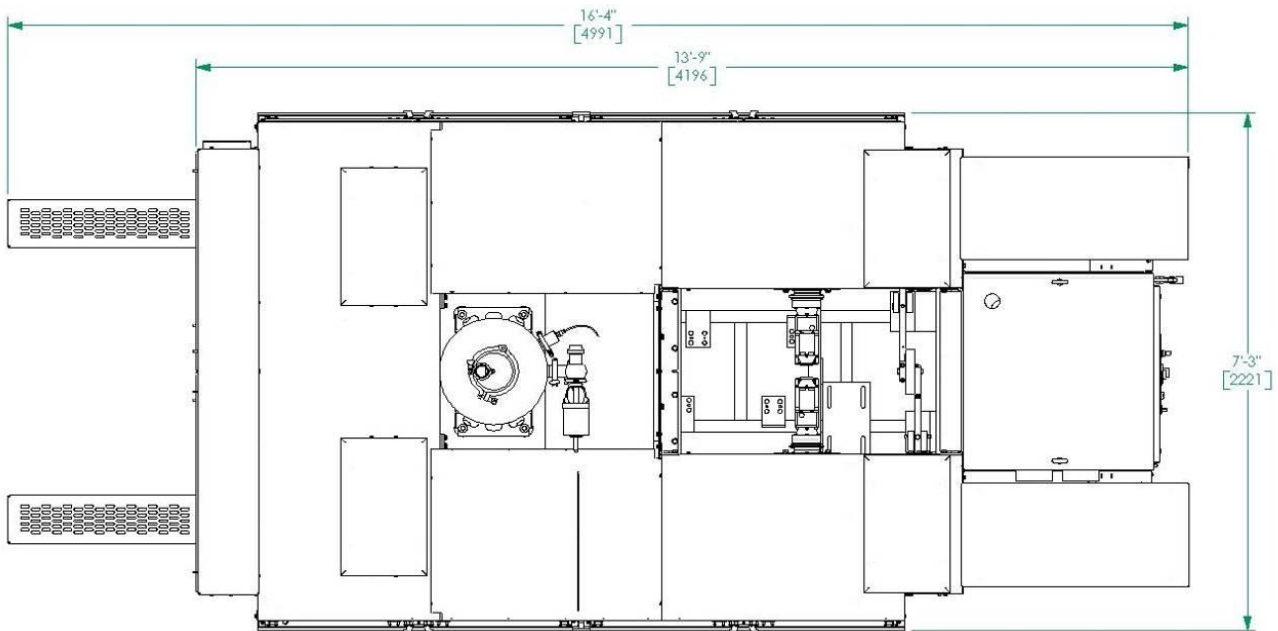
Q-70 Gable Top Packaging Machine

Utility Requirements:

- Electrical: 3 phase, 50/60 Hz, 460 volt
- Cooling Water: 10 gpm at 34° F (38 lpm at 1° C)
- Compressed Air: 70 scfm at 85 psig (2.0 m³/min at 6.0 kg/cm²)

Dimensions (Basic Machine):

- 422cm (13' 9") long x 216cm (7' 2") wide x 290cm (9' 6") high
- 9.1 m² (98.5 ft²) (not including discharge chutes)



2400 Sixth Street SW
Cedar Rapids, IA 52404 USA
Phone: 319-399-3200
Fax: 319-399-3543